

TÁRKI Social Research Institute

Budapest 1051
Nádor utca 7.

www.tarki.hu

tarki@tarki.hu

+361 3097676

2022



Facts

**Field:**

Applied social research

**Size:**

~ 25 staff + contracted experts

**History:**

Founded in 1985

In current form: since 1998

**Form:**

Independent, non-governmental

Hungarian ownership, 100% incorporated, shareholding company, unlisted, SME

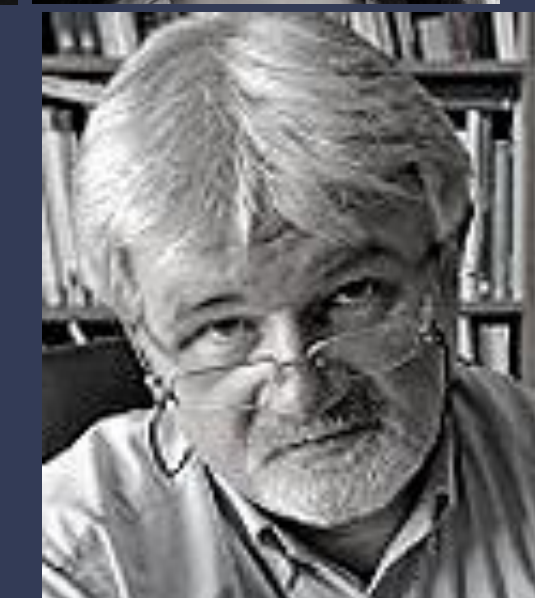
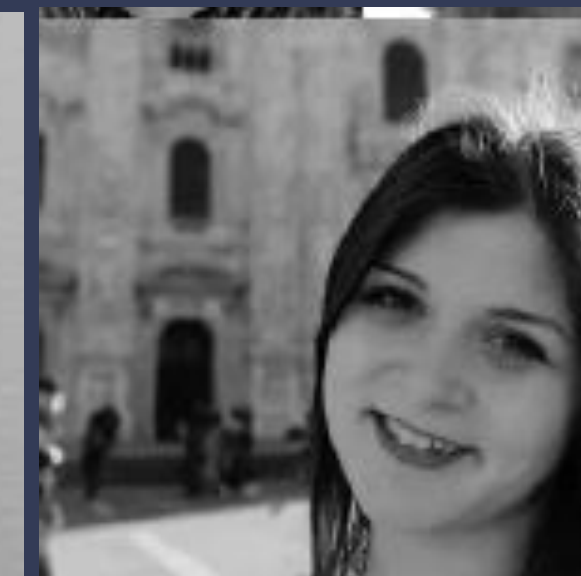
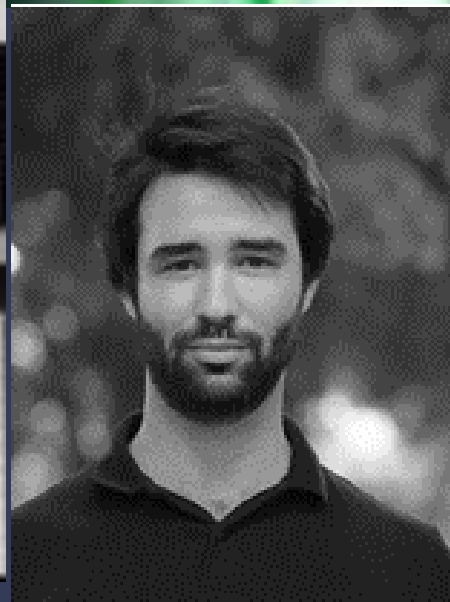
**Specificity:**

Own fieldwork apparatus

**TÁRKI group members:**

Tárki Foundation (Data Archive, CESSDA member, research support)

Kopint-TÁRKI (affiliated company, specialized in economy, business cycle, sectoral studies)







Data collection

Dedicated interviewer network

- 13 regional instructors, 160 interviewers
- PAPI, CAPI, CATI, Web-based surveys
- Call-Center

National and regional surveys

- Regular (quarterly) omnibus surveys
- Subnational targeted surveys
- Special/filtered subpopulation surveys

Hungarian and international cooperations

- Regular opinion polling, values studies, omnibus surveys
- Fielding large scientific surveys (SHARE, ISSP, ESS, PrivMort, CEORG)



TÁRKI Data Archive

- Over 800 datasets
- TÁRKI's own surveys and other prime sources,
- Cross-national ISSP, Eurobarometer, WVS and ESS surveys,
- Free access for students of accredited Hungarian educational institutions
- Online data catalogue
- CESSDA membership

Working in international consortium: EU founded projects with several international partners

Horizon2020, ERC

Single and multiple agency contracts with international agencies

EU DGs, UN, UNICEF, WB

National scientific projects

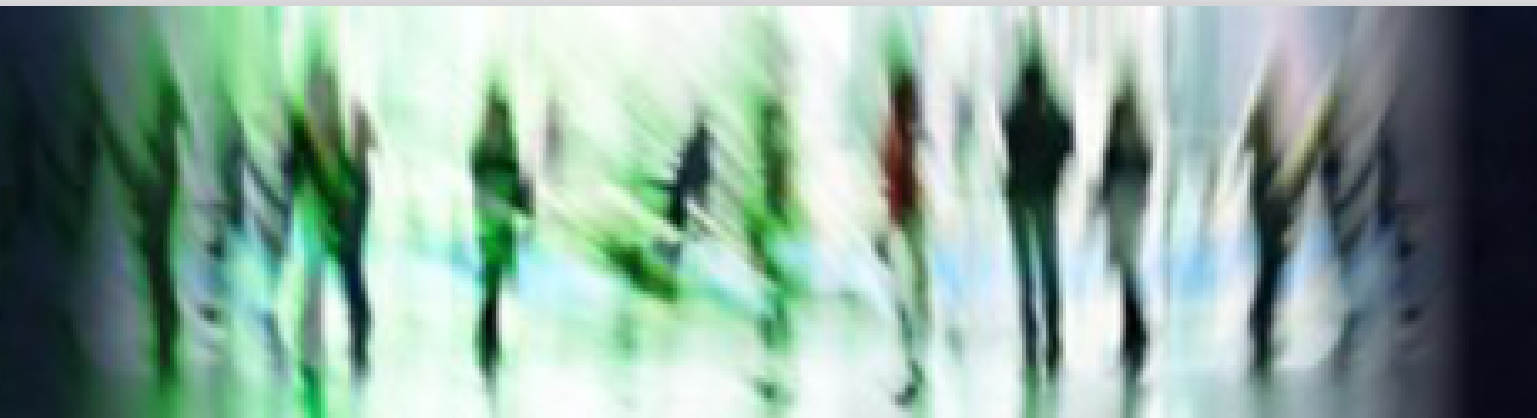
Hungarian Research and Innovation Office

Other national projects

Scientific and commercial

Data collection projects

When data is needed for other research



Recent EU Research Projects



IMPROVE 2012-2016

The research developed new tools for monitoring poverty, social policy and social innovative practices. For the first time reference budgets were computed for several member states using a single theoretical framework and a consistent methodology. TÁRKI lead work packages on measurement and indicators of poverty and on the situation of the Roma.



STYLE 2014-2017

The project brought 24 consortium partners together, including an international advisory network and local advisory boards of employers, unions, policy makers and NGOs from over 20 European countries. The project examined the obstacles and opportunities affecting youth employment in Europe.



Study on the adequacy and sustainability of social protection systems 2019-2020

The main aim of the study is to collect policy-relevant evidence on preferences of the citizens for social protection. It could be used to support the EU States in modernising their social protection systems. As well as informing them about perceptions in other countries, it should help them to design policies to respond to the demand for social protection and redistribution.



PRIVMORT 2012-2017

The project was a multi-Level indirect demographic analysis, lead by Cambridge University. The international consortium investigated patterns and reasons of mortality change in three countries (Belorussia, Hungary and Russia). TÁRKI coordinated large scale empirical surveys in the three countries.



Current EU Research Projects



InGRID2 2017-2021

As a continuation of InGRID, the objectives of the InGRID-2 are to advance the integration and innovation of distributed social sciences research infrastructures on 'poverty, living conditions and social policies' as well as 'working conditions, vulnerability and labour policies' in Europe. IPOLIS is being extended to include disabled persons and migrants.



R-HOME 2019-2021

The aim of the project is to reduce discrimination affecting Roma people with focusing on access to housing by a better understanding of the issues and by providing Roma with tools and knowledge to defend their own rights. It aims to support integration through empowerment, the support of their active participation, capacity building of Roma and pro-Roma civil society.



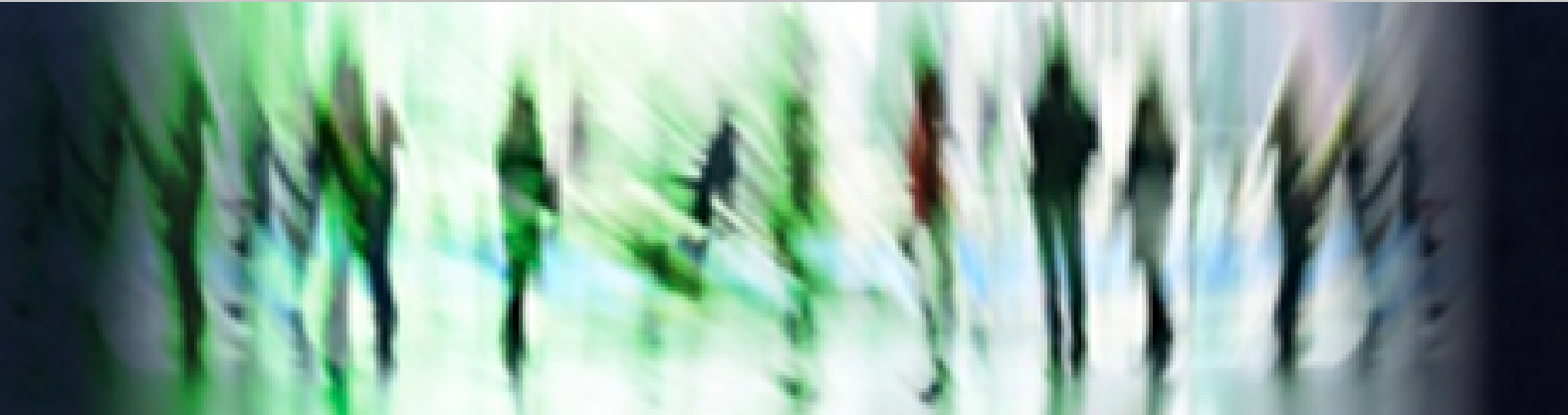
EUROSHIP 2020-2023

The EUROSHIP project aims to provide original and gender sensitive assessment of the current gaps in social protection against poverty and social exclusion in Europe. Through the involvement of national and European stakeholders, it aims to develop policy recommendations on how to strengthen social citizenship at the national and EU level.



UPLIFT 2020-2023

The project seeks to establish an innovative approach to urban policy design for reducing socio-economic inequalities. UPLIFT follows a multi-layer research method to map the processes and drivers of urban inequality. The project aims to explore how young people's voices can be put at the centre of youth policy in areas of housing, education and employment.



Our most recent Horizon Europe research projects

EUROSHIP

2019-2023

The international consortium will provide new, gender-sensitive, comparative knowledge about the effectiveness of changing social protection policies targeted at reducing poverty and social exclusion in Europe. Focal points will be the roles of social protection systems, digitalisation of work and social protection delivery, and the social and political opportunities for active agency by three groups of citizens: youth at risk, precarious workers with care obligations and elderly and disabled people with long-term care needs.

UPLIFT

2019-2023

The project seeks to establish an innovative approach to urban policy design for reducing socio-economic inequalities. UPLIFT follows a multi-layer research method to map the processes and drivers of urban inequality. First, it uses macro level findings to contextualise micro level outcomes. Second, it narrows down to sixteen functional urban areas looking at local inequality dimensions and drivers. On the third level come eight case studies, where micro-level analyses are carried out through the lens of youth. On the fourth level UPLIFT co-creates reflexive policies with local stakeholders and communities.



The Social Report series published every other year since 1990, analyse the most significant social and economic trends in Hungarian society.



The purpose of the Household Monitor series is the quick assessment of the changes in the stratification of society and in social inequalities.

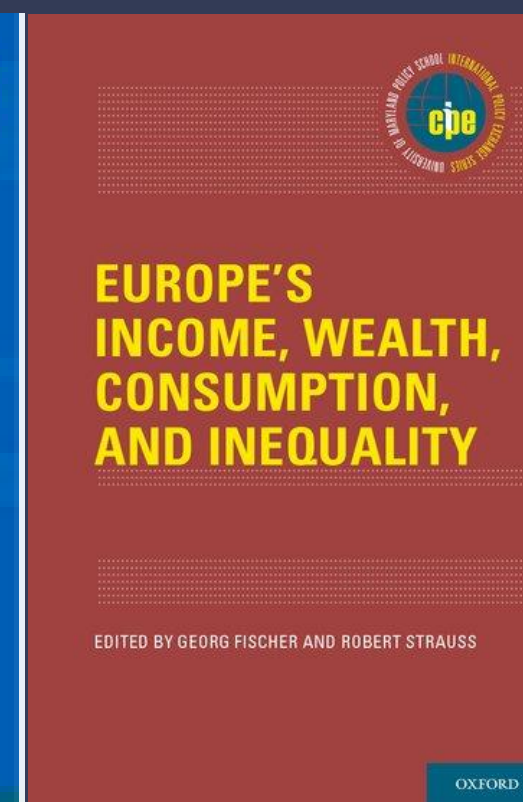
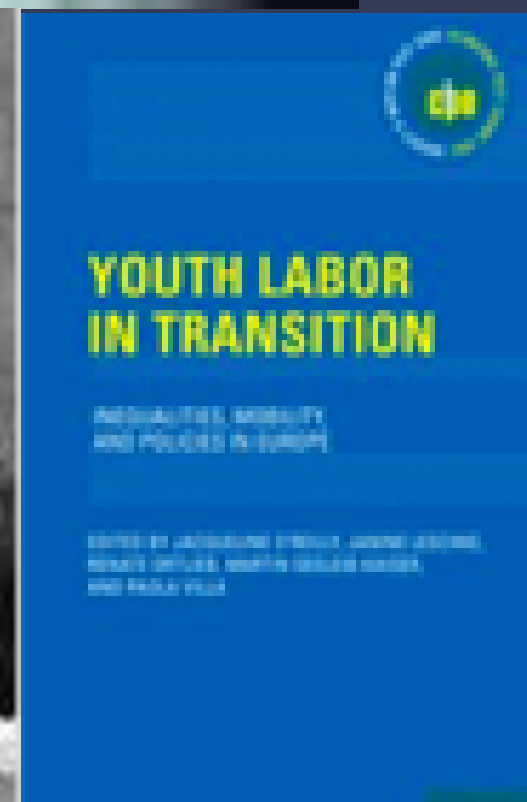
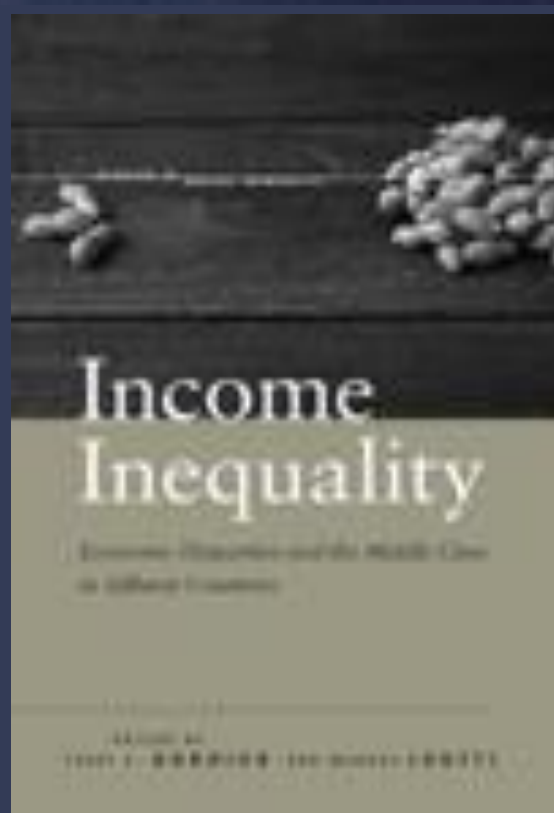


The Changing Roles series present the social and economic status of Hungarian women and men.

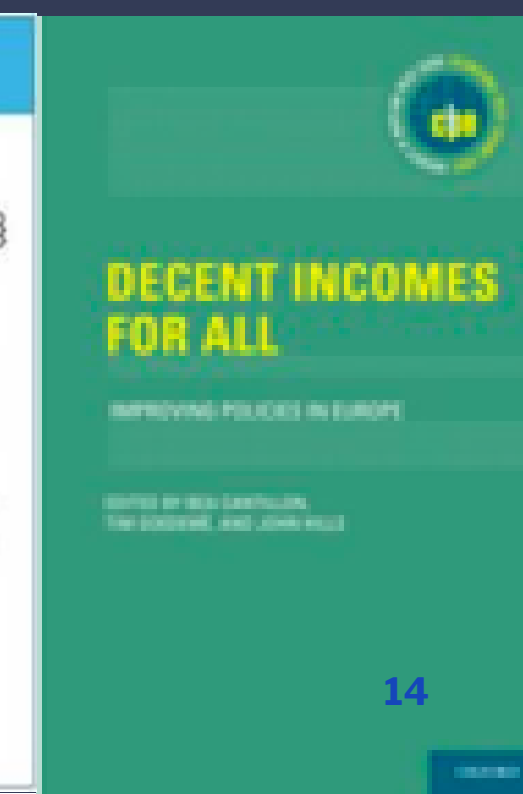
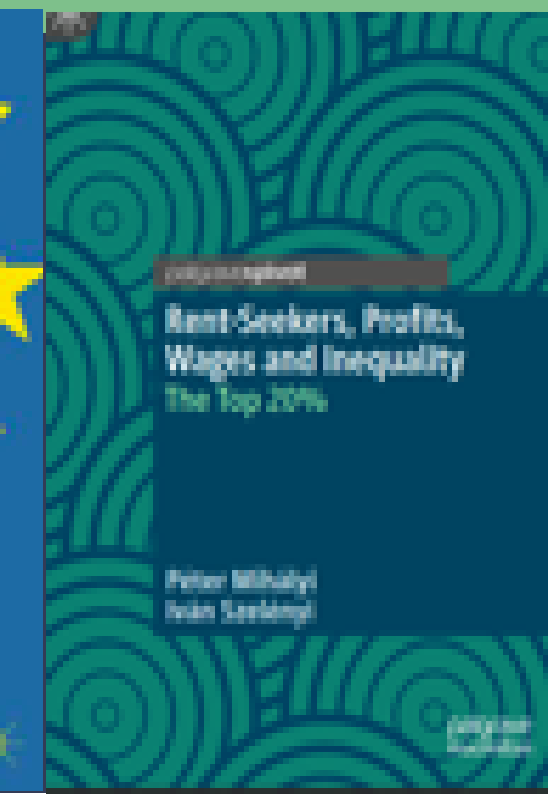


The European Social Report was published in 2008 and 2009.

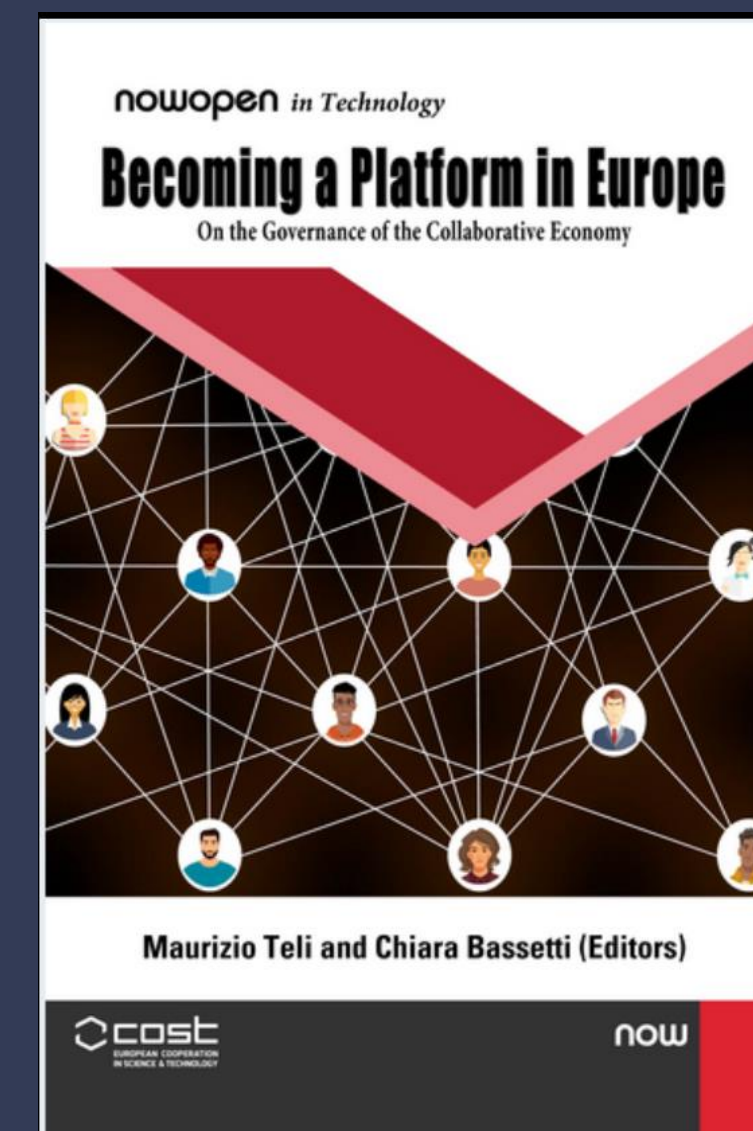




Infused in the circulation of international science



Some recent contributions





We provide data for major social science research projects in Europe and beyond



International
Social Survey
Programme



European
Social
Survey



Survey of Health,
Ageing and
Retirement in
Europe



World
Values Survey



Cross National
Data Center
in Luxembourg



Income
Distribution
Database (IDD)



Central European
Opinion Research
Group

Global Go To Think Tank Index Reports



The Global Index of Think Tanks was developed and launched in 2007 by Lauder Institute at the University of Pennsylvania. It is designed to identify and recognize centers of excellence in all the major areas of public policy research worldwide. The annual report ranks the world's leading think tanks in a variety of categories. We are proud of being reputed as producers of high-quality reports in various categories, like the list of Top Social Policy Think Tanks (5th in the CEE region), the list of Best Independent Think Tanks (2nd in the CEE region, 60th in the overall ranking), or the list of Top International Economics Policy Think Tanks (77th in 2020).

Digital footprint

Websites:



www.tarki.hu



www.kopint-tarki.hu



adatbank.tarki.hu

Newsletters:

[TÁRKI Newsletter](#)



[Euroship Newsletter](#)



[InGRID Newsletter](#)

