



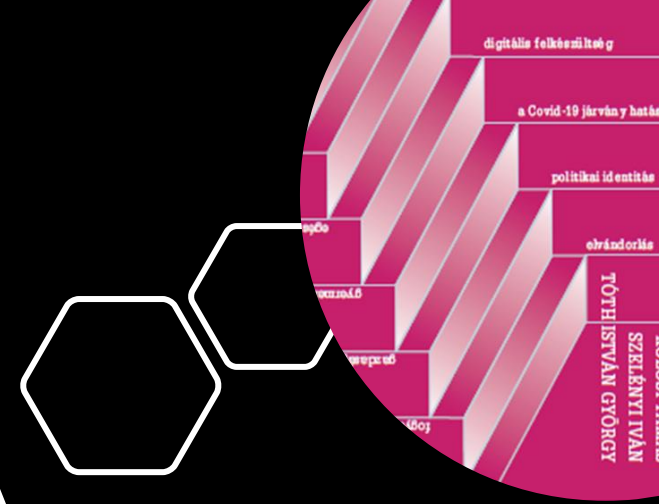
15th conference 'Social Monitoring and Reporting in Europe'  
Increasing divergence and changing social trends in Europe? Longer-term developments and consequences of the pandemic  
Online event, 9 March, 2021

# Hungarian Social Report 2020

## István György Tóth

# OUTLINE

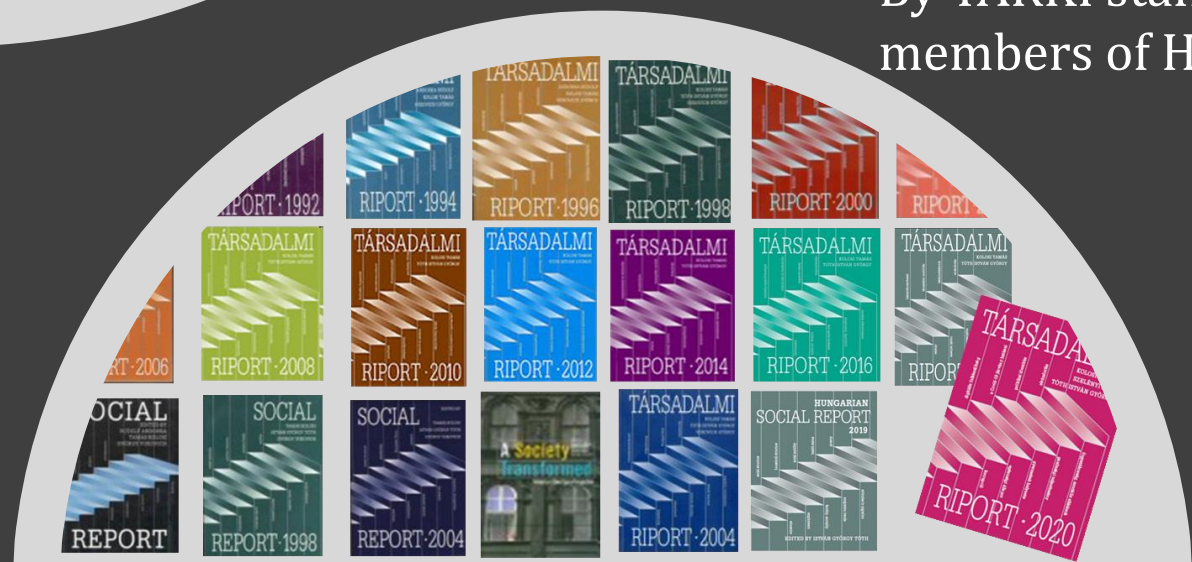
- The social report series
- The content of the current report
- Main messages on the Hungarian society (two themes only: convergence and pandemic)





# SOCIAL REPORT 2020 – THE 16TH IN THE SERIES

- 1990-2020, every second year
- Social indicators and analyses
- Empirical research reports
- International comparisons
- Users: administration, academia, media university students
- Finance: social integration and social policy secretariat in the Ministry of the Interior - not the welfare ministry (yet again...)
- By TARKI staff and (at least half) by other members of HU research community



# Contents

Kolosi Tamás–Szelényi Iván–Tóth István György:  
Introduction

## **I. Economic prosperity: chances and limits to catching up**

1. Convergence of CEE to the West: 30 years after the systemic change (Medgyesi Márton–Tóth István György)
2. Growth, consumption and savings (Oblath Gábor–Palócz Éva)
3. Systemic corruption (Martin József Péter)
4. Sustainability (Bartus Gábor)

## **II. Demography**

5. Emigration and re-migration, labour market effects (Hárs Ágnes)
6. Marriage, cohabitation and fertility trends (Kapitány Balázs–Murinkó Livia)
7. Family composition and inequality: Hungary in OECD comparison (Förster Michael–Vindics Anna)
8. Life events and their perceptions (Messing Vera–Ságvári Bence)





# Contents

## **III. Competencies, health and well being**

9. Adult literacy (PIAAC results for Hungary) (Lannert Judit–Holb Éva)
10. Digital skills in international comparisons (Cseh Gergely)
11. Active ageing, health, labour markets (Branyiczki Réka)
12. Child well-being in international comparisons (Róbert Péter–Szabó Lilla–Széll Krisztián)

## **IV. Vulnerable groups and social services**

13. Child poverty in Hungary and in EU countries (Gábor András–Kopasz Marianna–Donika Limani)
14. Time series on homelessness (Győri Péter)
15. Household indebtedness experiences (Major Gábor)
16. Situation of the disabled (Kozma Ágnes–Petri Gábor–Bernát Anikó)
17. Access to health in segregated areas (Sándor János–Vincze Ferenc–Jenei Tibor–Kőrösi László–Falusi Zsófia–Kósa Karolina–Ádány Róza)
18. Social services and their take-up (Czibere Károly–Mester Dániel)

# Contents

## V. Attitudes

19. EU and Euro attitudes

(Kolosi Tamás–Hudácskó Szilvia)

20. Elite discourse and polarization (Janky Béla)

21. Welfare attitudes in Europe (Herke Boglárka–  
Medgyesi Márton)

22. Popular vies on environmentalism (Schneider  
Mihály–Medgyesi Márton)

23. Safety and security (Róbert Péter)

## VI. Pandemic: economic, health and social effects

24. Covid–19 pandemic: results of a health survey

(Merkely Béla–Fülöp Gábor Áron–Kosztin Annamária–Vokó  
Zoltán)

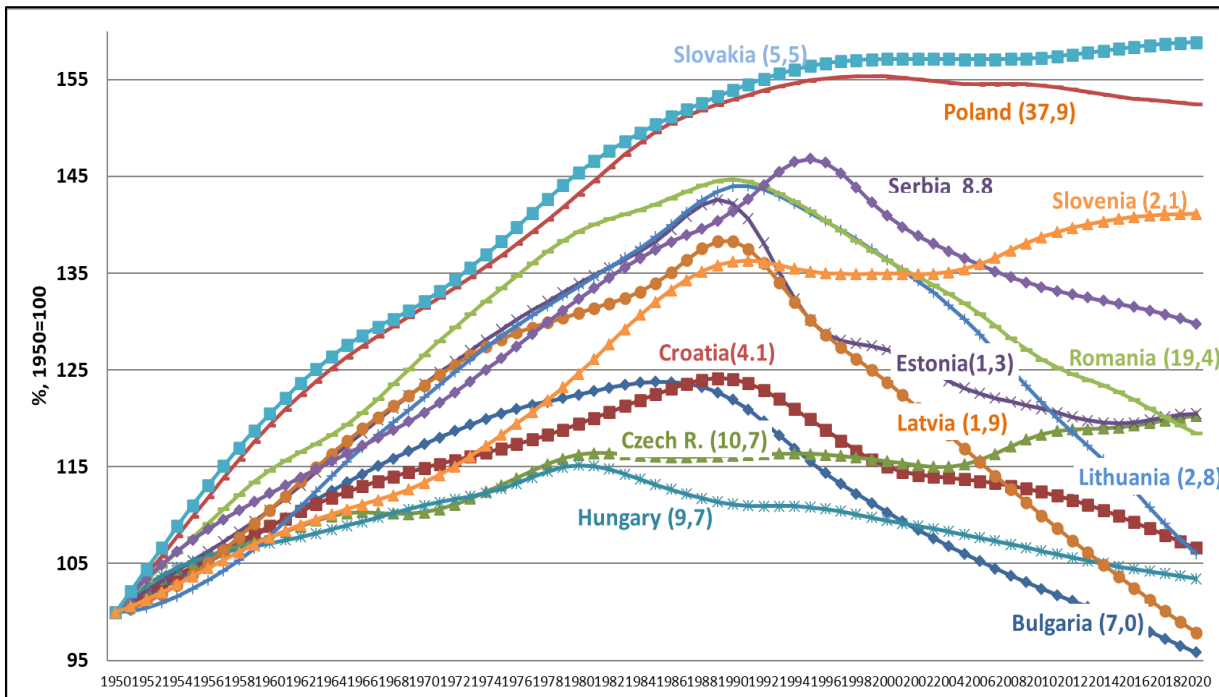
25. Public opinion on the pandemic and its treatment (Tóth  
István György–Hudácskó Szilvia)

26. Economic effects (Palócz Éva–Matheika Zoltán)



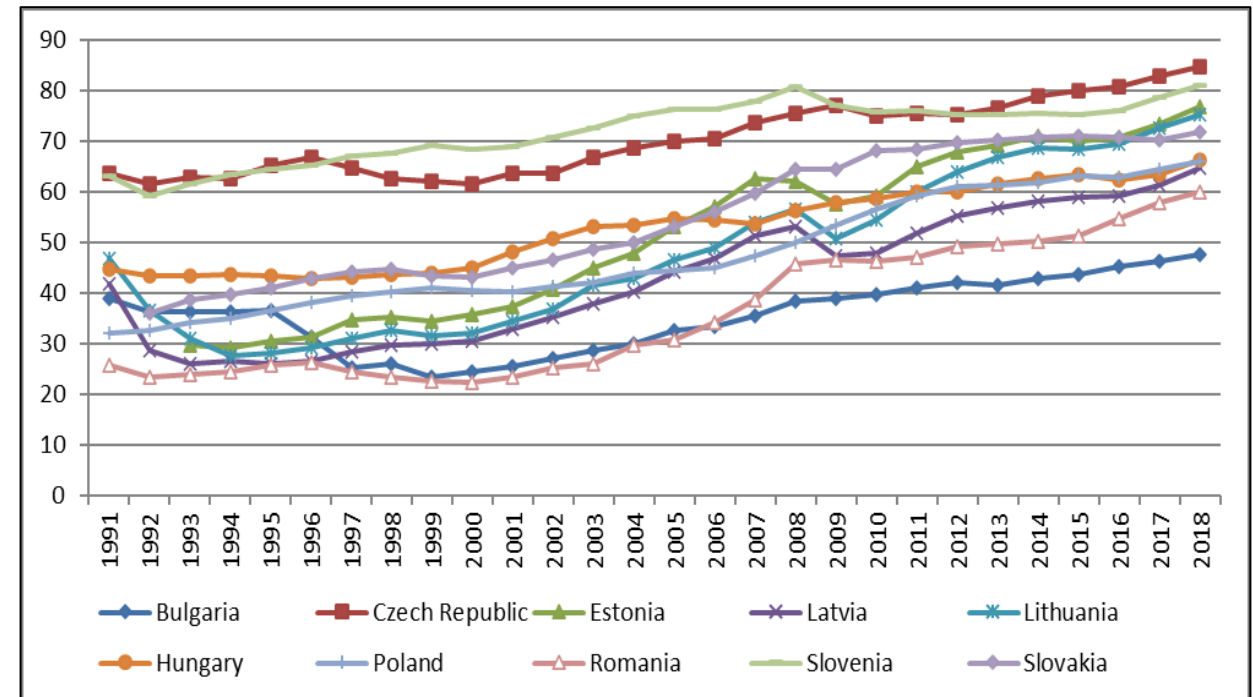
# Convergence, regional

TRENDS OF TOTAL POPULATION IN CEE COUNTRIES, 1950=100 (POPULATION SIZE IN 2019, MILLIONS, IN BRACKETS)



Forrás: Medgyesi-Tóth, United Nations (2019) adatai alapján

EVOLUTION OF RELATIVE PER CAPITA GDP, PPS (% , EU15=100)

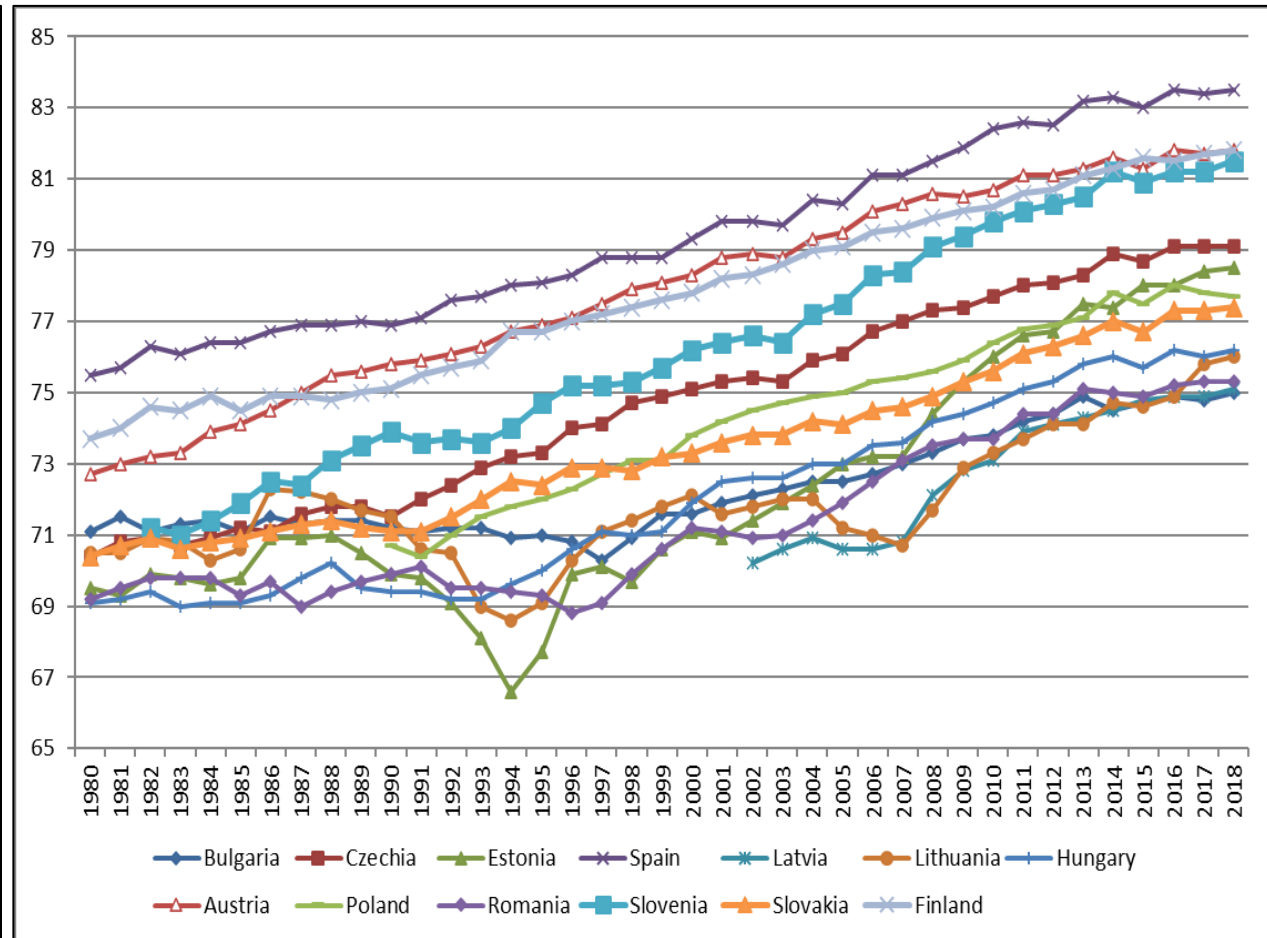
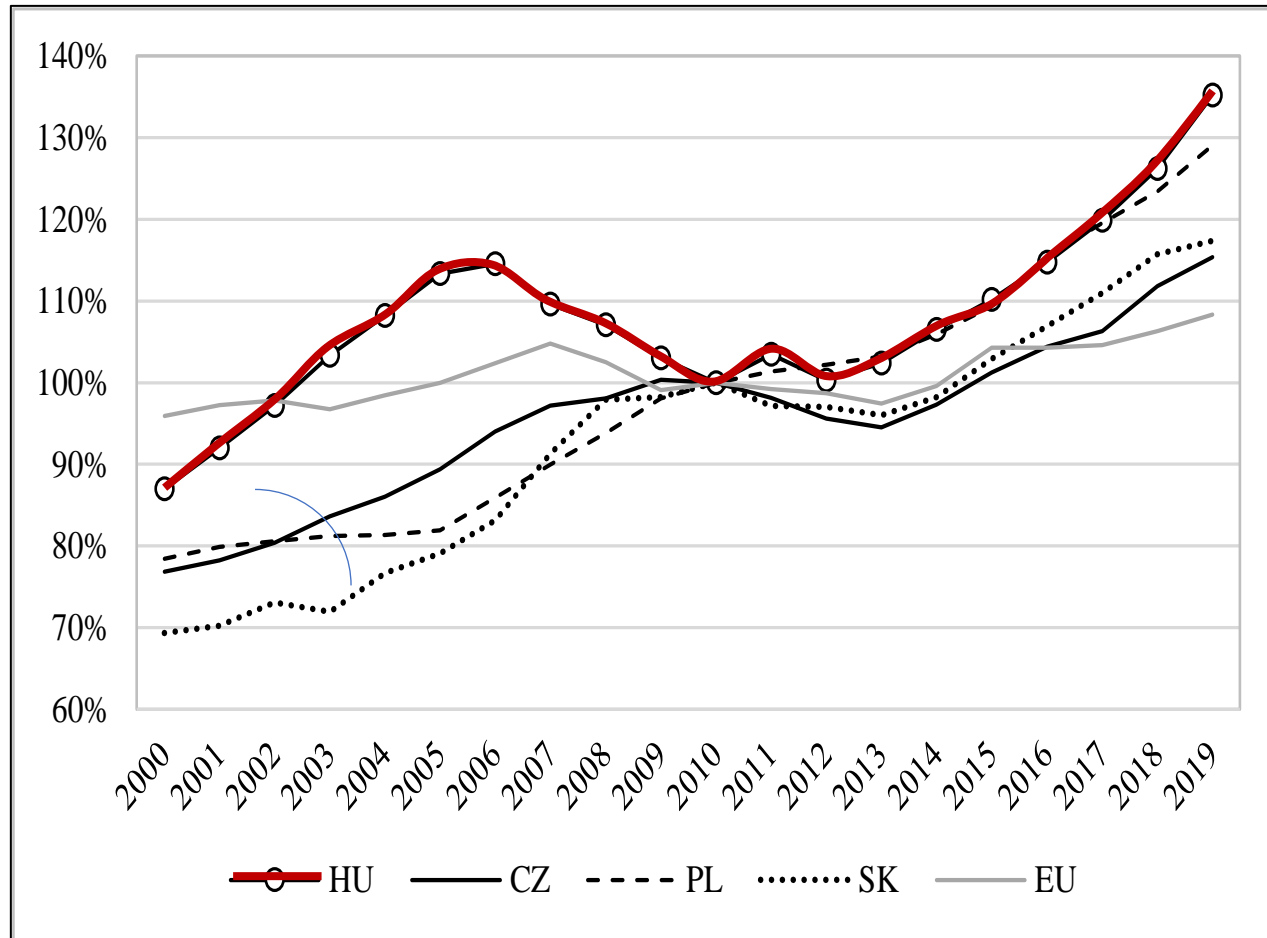


Forrás: Medgyesi-Tóth, 2020, AMECO-adatbázis, Európai Bizottság (HVGDPR tábla)

# Convergence, regional

GROSS REAL INCOME OF HOUSEHOLDS IN V4-COUNTRIES, EU AVERAGE 2000 - 2019 KÖZÖTT (PERCENT, 2010=100)

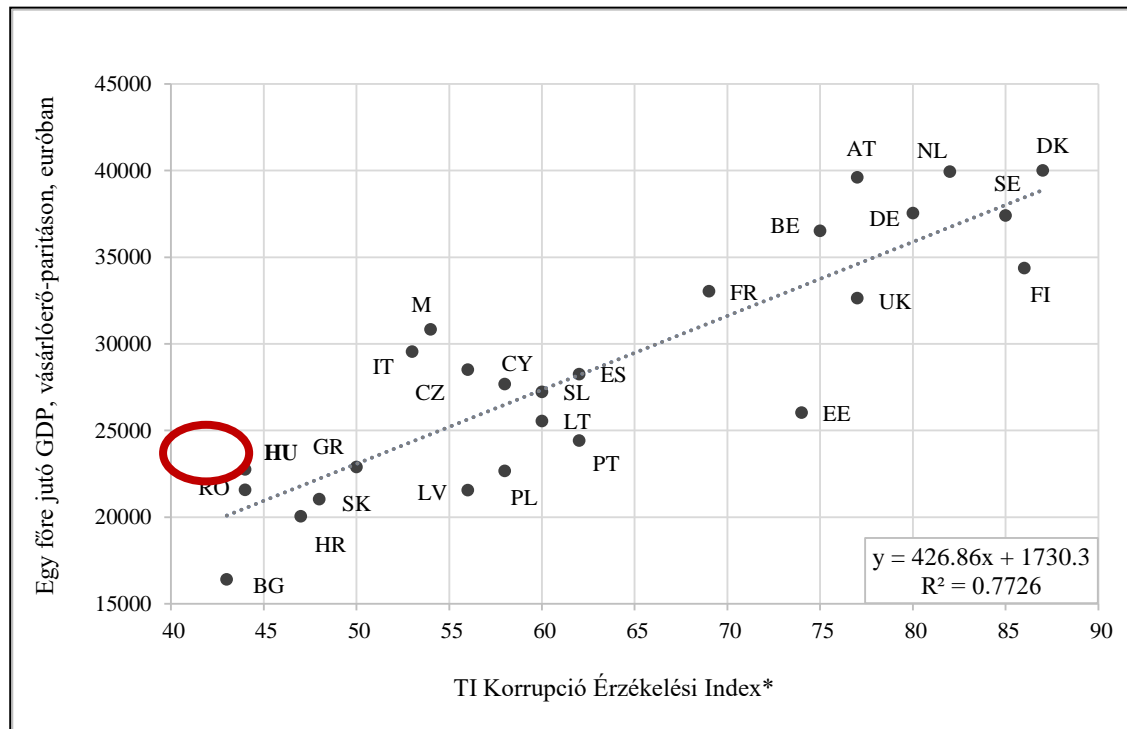
LIFE EXPECTANCY AT BIRTH IN CEE AND IN SOME EU-15 COUNTRIES, 1982-2018 (YEARS)



Source: data from Eurostat and the AMECO database, Palócz and Oblath.

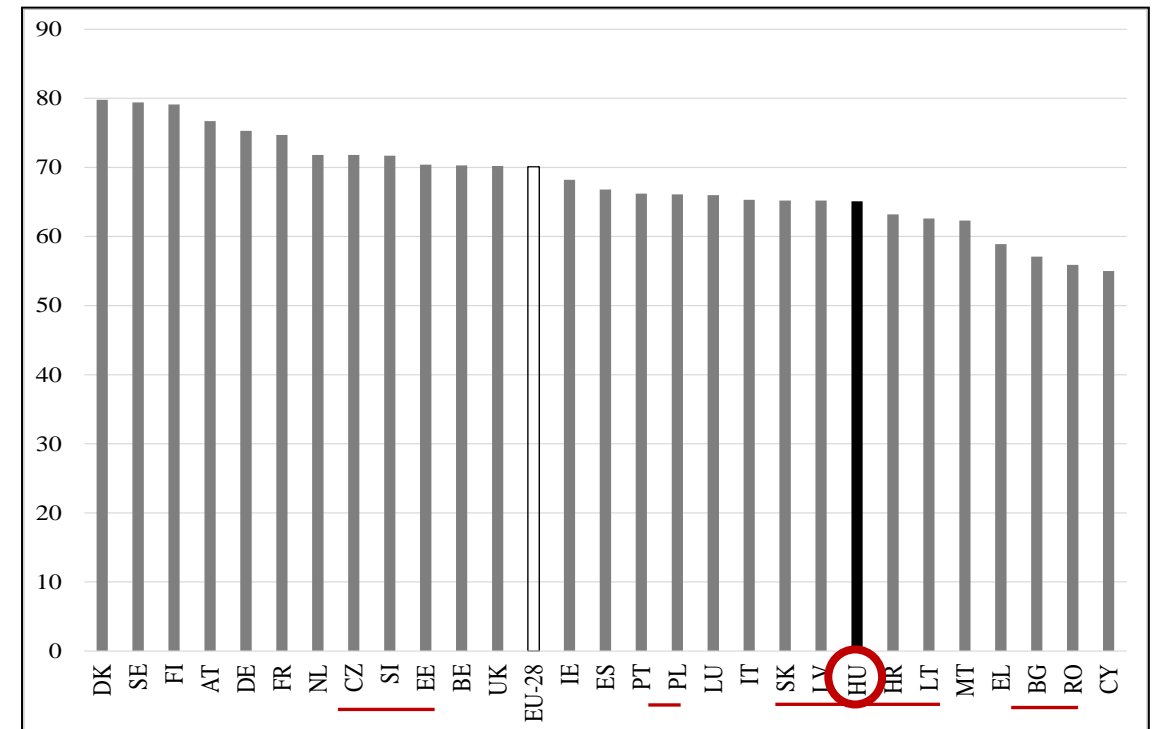
# Convergence, regional

CORRUPTION PERCEPTION AND PER CAPITA GDP IN EU COUNTRIES, 2019



Source: data from Eurostat and Transparency International, Martin J.

SDG PERFORMANCE, IN % OF POLICY TARGETS IN EU COUNTRIES, 2019

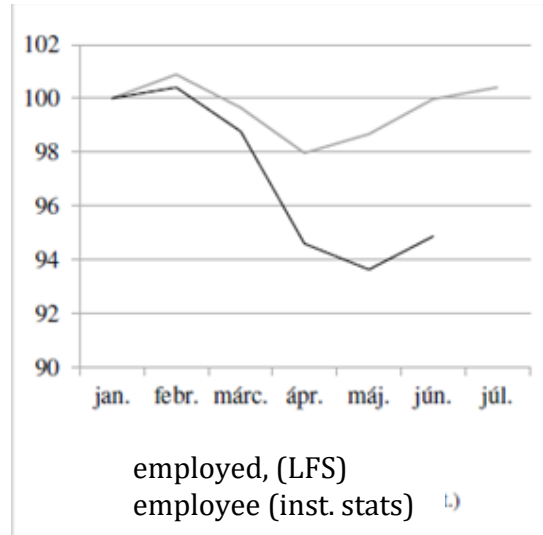


Source: Bartus, 2020

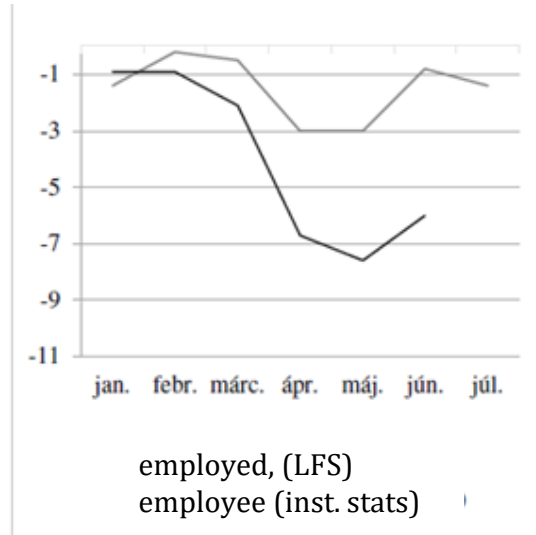
# Economic consequences of the wave 1 restrictions: labour market effects

EMPLOYED AND EMPLOYEES, % CHANGE IN HU, JAN-JUN 2020

Jan 2020=100,

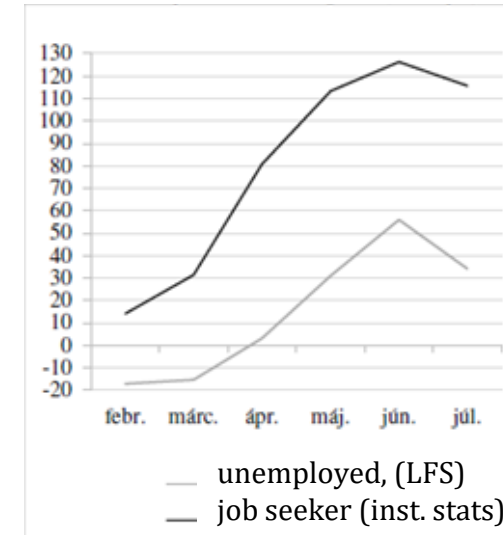


%change, prev yr

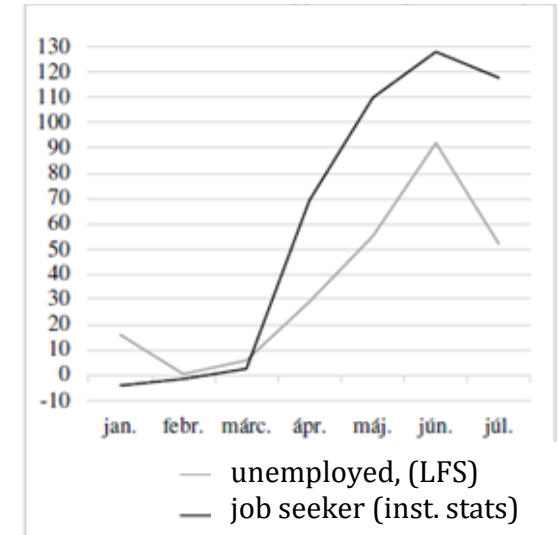


UNEMPLOYED AND JOB SEARCHERS, INCREMENT IN 1000 PERS, JAN-JUN 2020

since Jan 2020



to prev yr same period

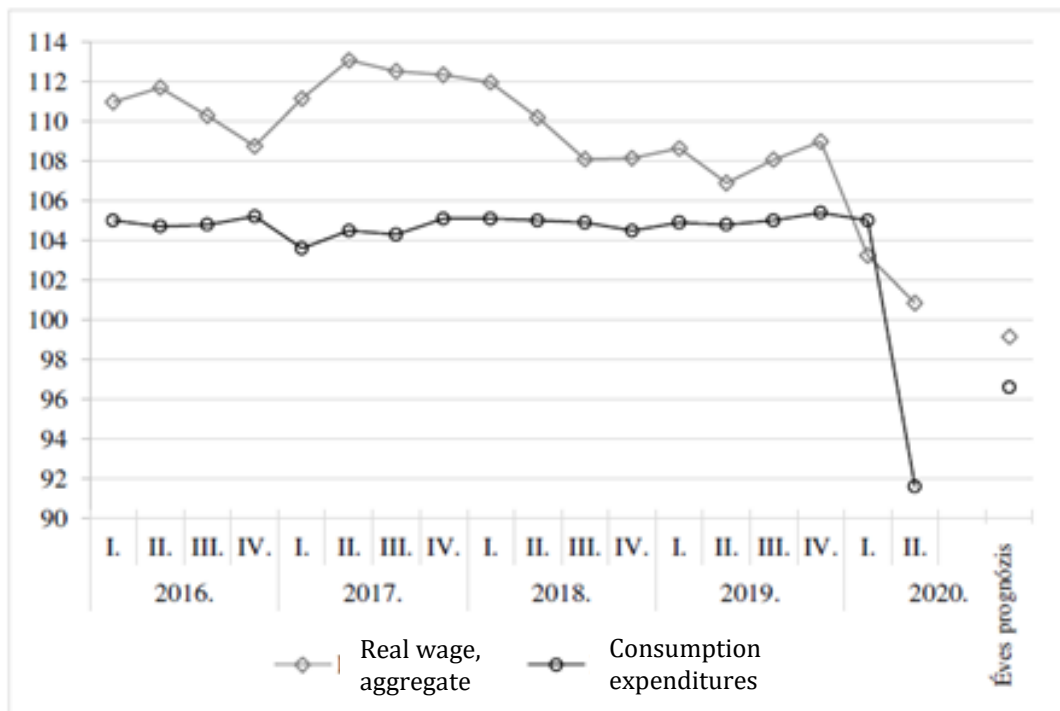


Source: Palócz, É. – Z. Matheika 202. Dilemmák a Covid-19-válság magyarországi gazdasági hatásairól in: In: Kolosi, T. - I. Gy. Tóth – I. Szelényi (2020): Társadalmi riport 2020 Budapest:Tárki, pp 573-590.



# Economic consequences of the wave 1 restrictions: consumption and GDP

VOLUME OF REAL INCOMES AND CONSUMPTION EXPENDITURE IN HUNGARY, 2016-2020 (PREVIOUS YEAR =100)



Source: Palócz, É. – Z. Matheika 202. Dilemmák a Covid-19-válság magyarországi gazdasági hatásairól in: In: Kolosi, T. - I. Gy. Tóth – I. Szelényi (2020): Társadalmi riport 2020 Budapest: Tárki, pp 573-590.

	2019	2020	2021
GDP	4.9%	-5.8%	3.5%
Gross Fixed Capital Formation	15.3%	-7.0%	4.5%
Industrial Production	5.4%	-7.6%	5.0%
Gross Salaries	11.3%	8.8%	6.5%
Unemployment*	3.4%	4.3%	4.0%
Current+Capital Account**	1.0%	0.3%	0.3%
General Government**	-2.0%	-7.0%	-5.0%
Consumer Price Index*	3.4%	3.7%	3.7%
MNB Base Rate***	0.9%	0.6%	0.6%
10-Year Yield***	2.01%	2.5%	2.5%

\*annual average \*\*in % of GDP \*\*\*at year-end

■ Fact ■ Forecast

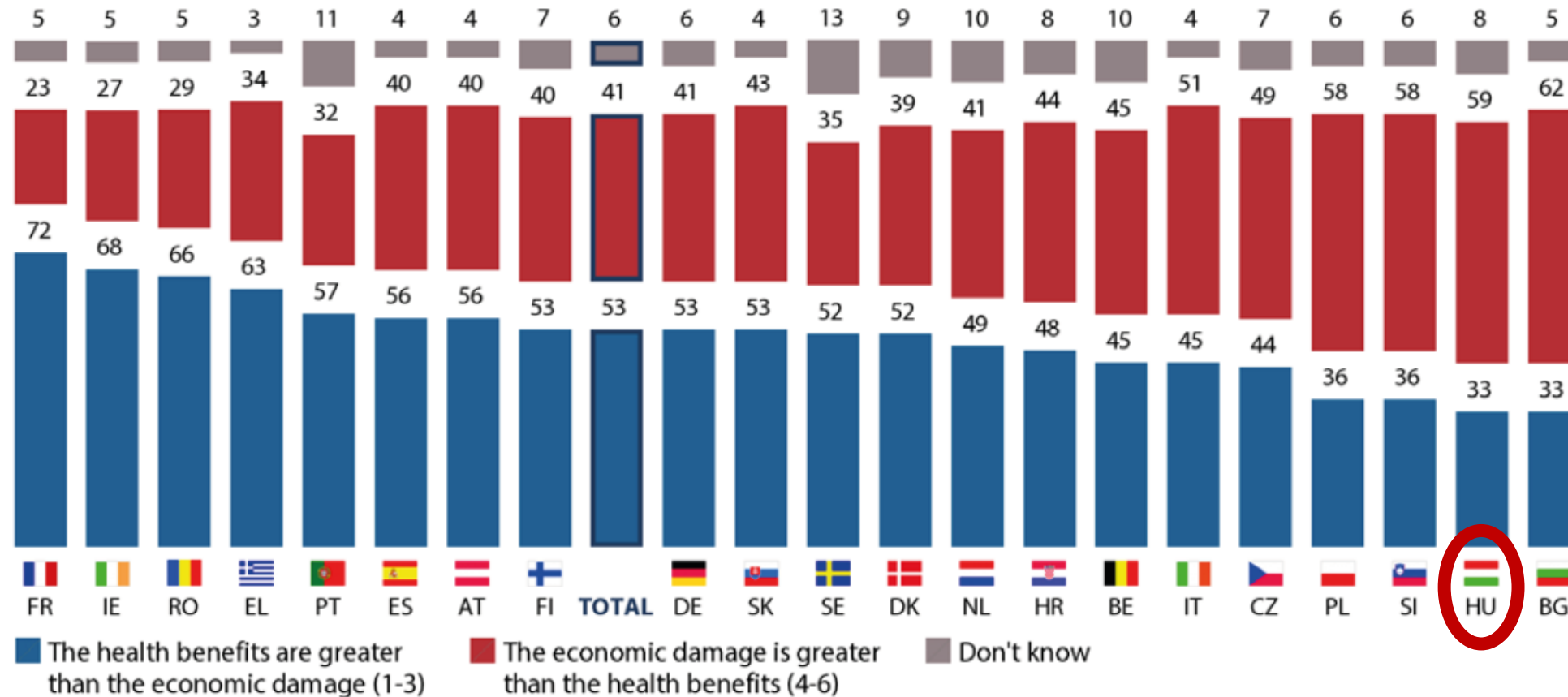
Source:



# Survey results by Kantar (fielded: 23 April - 1 May)

**Q3** Where do you position yourself between these two statements regarding the consequences of the restriction measures in (OUR COUNTRY)? Please use this scale from 1 to 6, where "1" means that the health benefits are greater than the economic damage, and "6" that economic damage is greater than the health benefits, the remaining numbers indicates something in between these two positions.

(%)

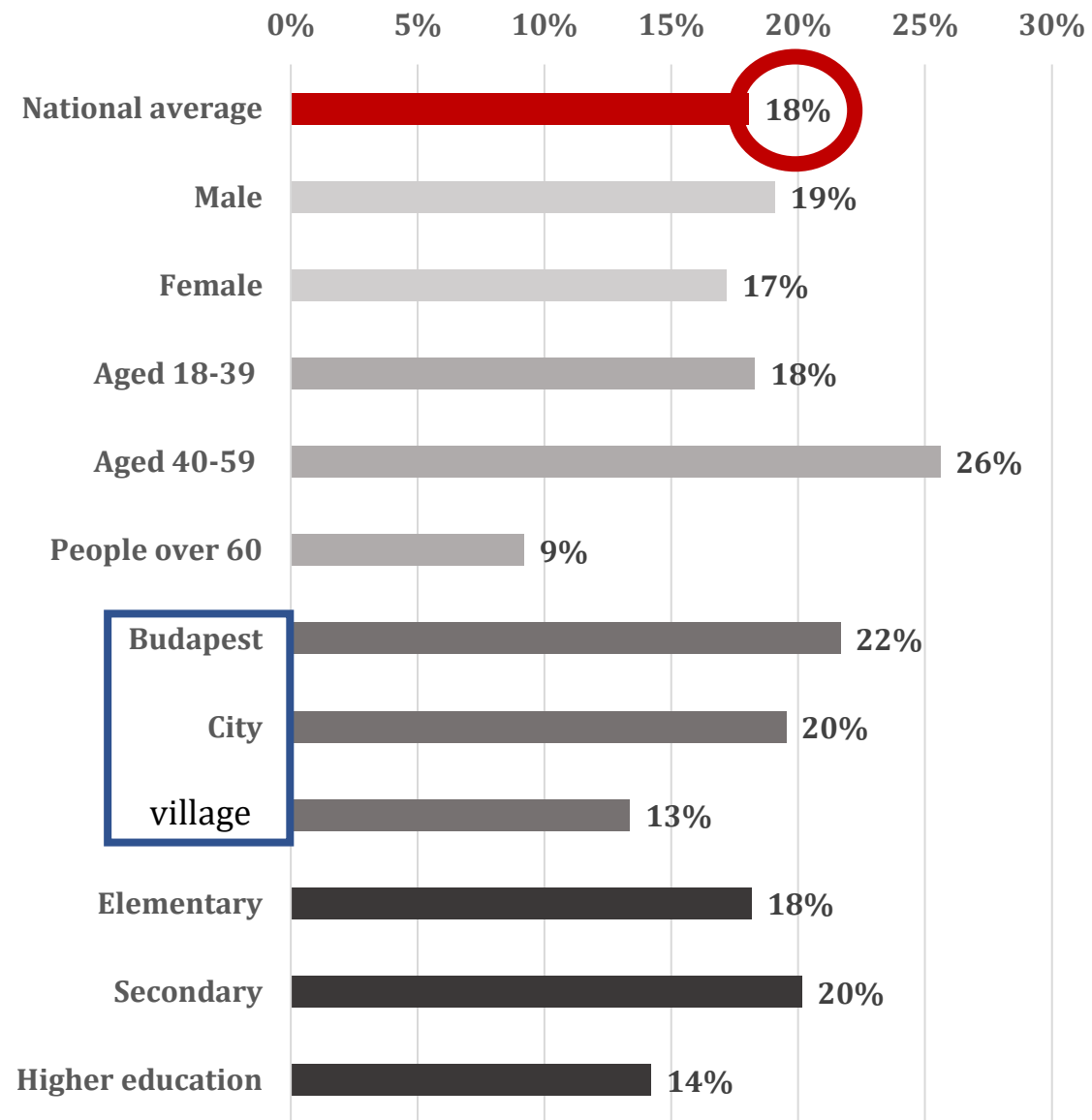


Note: online survey for the active age population – Hungary: 16-54 years of age only

# Data on incidence (1): loss of income

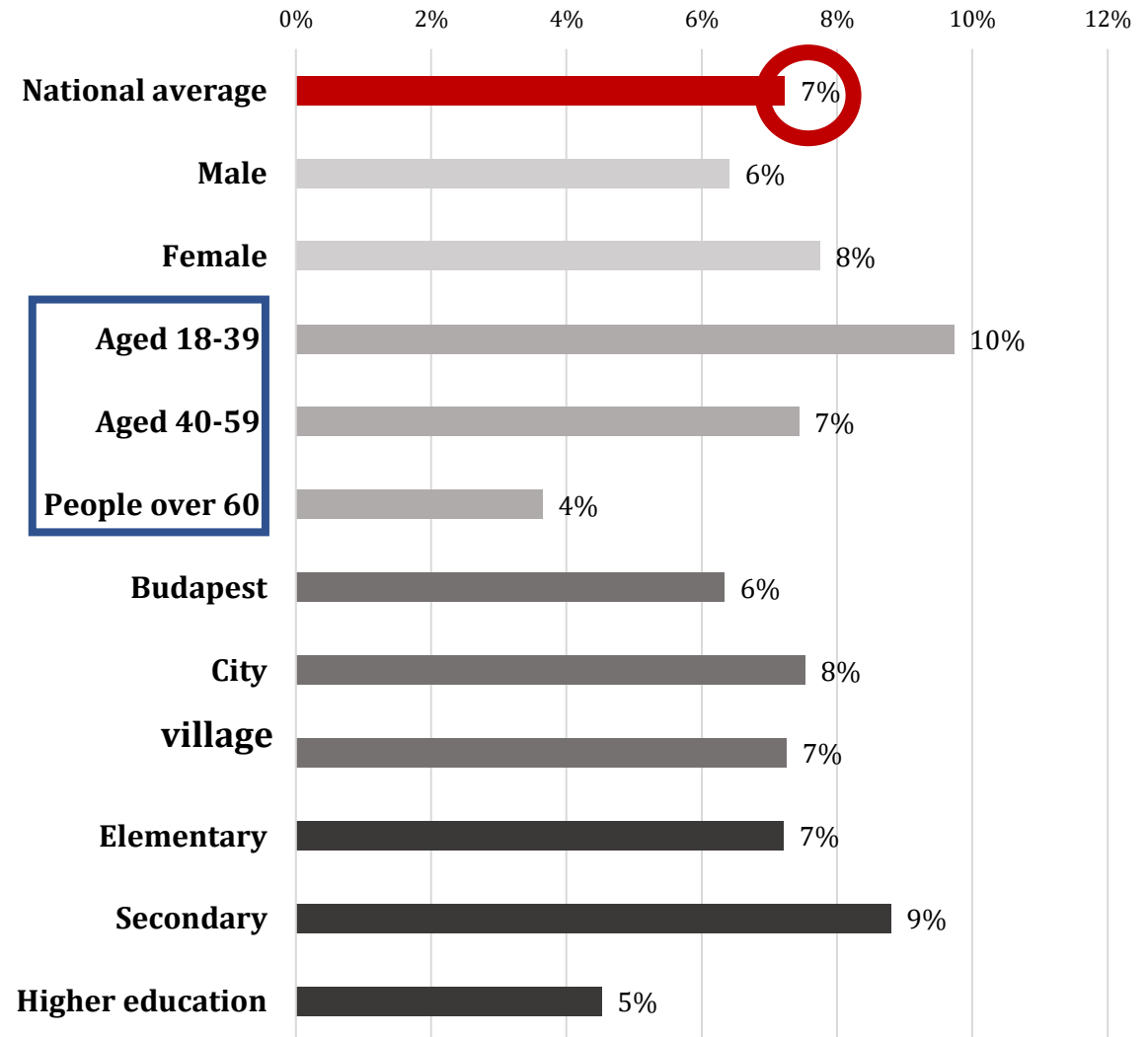
Estimates for	'000	%
<b>Persons</b> reporting significant income loss last month	1450	18%
<b>Persons</b> (hholds) reporting significant income loss of someone else in family due to confinement	1036	26%
<b>Individuals living in households</b> where <b>household income declined</b> due to someones's income loss	2590	26%

Source: Tóth and Hudácskó 2020 based on COVID 2020 survey by Tarki. To appear here



# Data on incidence (2): lost work last month

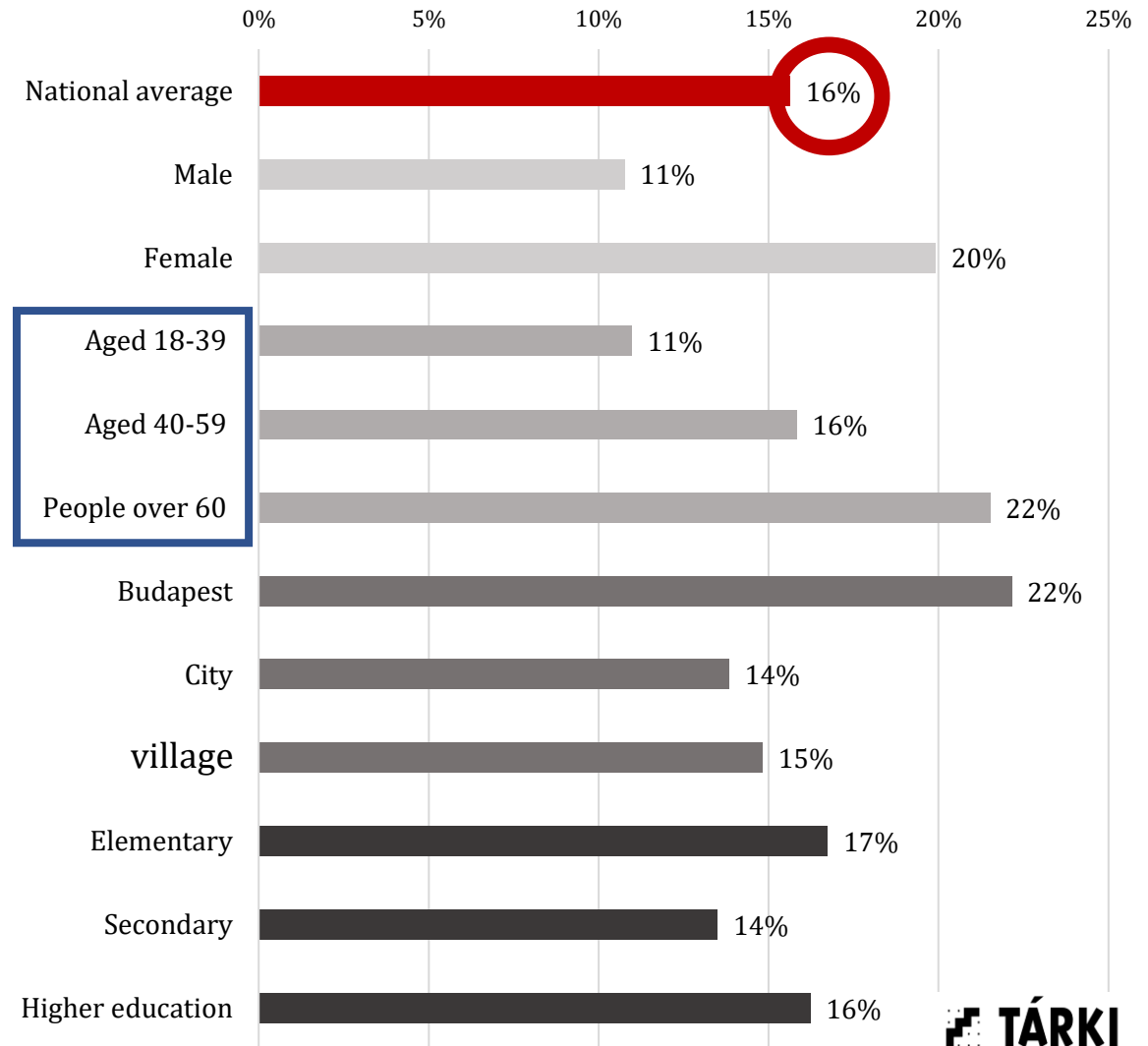
Estimates for	'000	%
Persons reporting lost work last month	558	7%



Source: Tóth and Hudácskó 2020 based on COVID 2020 survey by Tarki. To appear here

# Data on incidence (3): psychological problems

Estimates for	'000	%
Persons reporting some kind of psychological problems (depression, anxiety, lock feeling)	1282	16%



Source: Tóth and Hudácskó 2020 based on COVID 2020 survey by Tarki. To appear here



# Main themes of the **2022** Social Report

- The scarring effects of the pandemic
- Results and consequences of the 2022 Hungarian national elections
- Mobility, inequality and life chances – Hungary in the past four decades

<https://www.tarki.hu/tarsadalmi-riport>



For more info and the series and for Pdf by chapter, Mobi and eBook format:  
<https://www.tarki.hu/tarsadalmi-riport>

